

# CountyCare Plus

## Medicare-Medicaid Plan

---

November 2021



# Network Participation Plan Overview: Agenda

---

## Plan Overview

- CountyCare Plus Medicare-Medicaid Plan
- Why Join the Network?
- Comprehensive Member Benefits

## Templates for Document Submission

- Agreement (attached)
- IAMHP Roster Sheet (attached)
- IRS W-9 Form

## Cover Letter

- Instructions & Contact Info
- Provider Agreement Terms

# Introducing CountyCare Plus Medicare-Medicaid Plan

Community-focused MMAI Plan Setting New Standards for the Industry

## What is MMAI?

- Medicare-Medicaid Alignment Initiative (MMAI) is a Medicare-Medicaid (MMP) dual health plan with all Medicare and Medicaid benefits plus additional supplemental benefits, including dental and vision.
- Illinois' MMAI program is jointly administered by CMS and HFS.
- Includes all Medicaid services and all Medicare services, with an integrated administration of both.

## CountyCare Foundation

CountyCare Plus MMAI plan will supplement CountyCare's Medicaid (CountyCare) and Medicare Advantage (MoreCare) plans. With CountyCare's strong foundation, we can leverage our provider partnerships to improve health equity and improve care delivery for Cook County residents who are eligible for both Medicaid and Medicare Services (called "dual eligibles").

# Why choose CountyCare Plus?

Join our provider-led, mission driven MMAI Plan

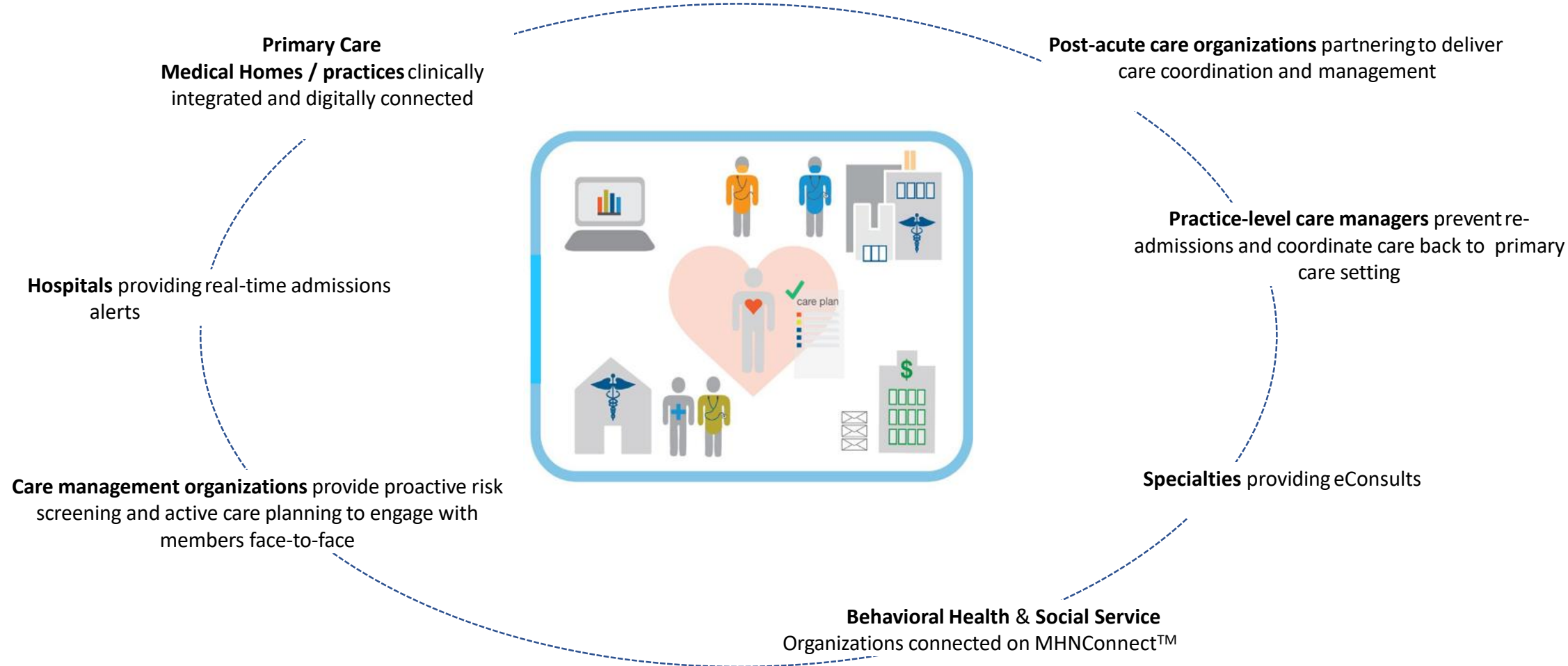
---

1. Increase access to seamless, person-centered quality programs that integrate primary, acute, behavioral, prescription drugs and long-term care supports and services for your patients.
2. Eliminate cost shifting between the Medicare and Medicaid programs, while preserving or enhancing the quality of care furnished to dual-eligible beneficiaries.
3. Full continuum of benefits provided to dual-eligible beneficiaries across both programs through simpler reimbursement systems and financial incentives to providers.
4. Be part of a well-recognized, community-based and provider-led plan with a robust network!



# Community-Based Provider Partnerships Ensure Continuity of Care

Aligned, digitally connected providers, partners drive positive health outcomes, reduce medical expenses



# Comprehensive Member Benefits Include:

---

## Care Coordination and Transitions of Care

- Care coordination team & personalized care plan
- Help transitioning home from the hospital or nursing home

## Medicaid Benefits

- Medicaid State Plan services including nursing facilities and behavioral health services
- Home and Community Based Services (HCBS Waivers) including those for elderly, persons with disabilities, persons with HIV/AIDS or traumatic brain injury, and supportive living facilities

## Medicare Benefits

- Medicare services including primary & acute care, Part D, and skilled nursing facilities
- No insurance premiums, no co-pays for Medicare Part A and B

**CountyCare Plus is a fully integrated Medicare-Medicaid Plan with no cost-sharing and supplemental benefits focusing on the whole-person needs of Cook County residents**

# Next Steps to Join CountyCare Plus MMAI Network

---

Please submit the following documents as requested in the email you received:

1. Signed Agreement
2. Initial roster (IAMHP Medicaid Universal Roster)
3. IRS W-9 form

Questions? Contact our contracting team:

**Ron Michaelson**

Cook County Health Plan Services  
(312) 952-1922

[ronald.michaelson@cookcountyhhs.org](mailto:ronald.michaelson@cookcountyhhs.org)

**Tiffany Shegog**

Cook County Health Plan Services  
(331) 452-5227

[Tshegog@countycare.com](mailto:Tshegog@countycare.com)

Thank you for your interest in the **CountyCare Plus MMAI** Health Plan!

# Provider Agreement Terms

---

## Contract Terms and Process

- If currently contracted with CountyCare, expedited amendment process and renewal on original anniversary date
- If new to the network, one-year initial term renewing annually on anniversary date

## Centers for Medicare and Medicaid Services (CMS) and Healthcare and Family Services (HFS) Requirements

- Full compliance with CMS & HFS requirements for providers
- Providers required to share credentialing information sufficient to meet requirements



Thank you

---

We look forward to working  
with you.

